

INSTAR

Quick Installation Guide IN-2907 Lens (6mm)

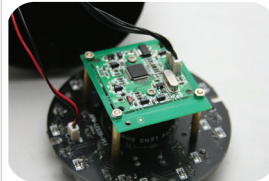
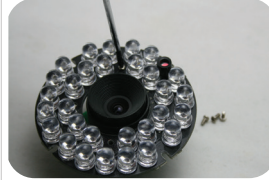
Constituent parts of Delivery:
6mm Lens; Lens Mount; Quick Installation Guide (pdf download)



Step 1: Remove the top cover by gently pulling it in the direction of the lens.



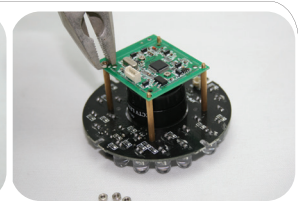
Step 2: Hold the back of the camera and remove the front cover by turning counter clockwise.



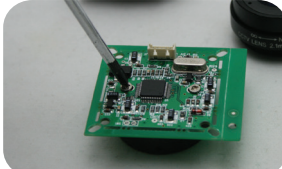
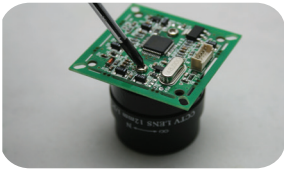
Step 5: Mount the new lens onto the CMOS board and reconnect the IR board.



Step 3: Remove the 4 screws mounting the infrared board onto the casing and remove it together with the lens and the CMOS board. Next unscrew the 4 nuts mounting the CMOS board on the 4 spacers. Remove the IR-LED board.



Step 4: Unscrew the original lens mount together with the 12mm lens and exchange it with the new mount.



Step 6: Reconnect the camera to your network, access the live video and adjust the focus by gently turning the lens. Mount the IR-LED board back onto the casing, close the camera case by mounting the front glass and reattach the the top cover.

