

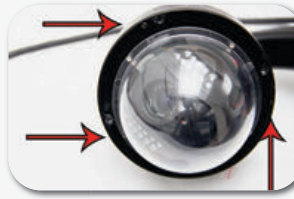
Content of delivery: 1x Heating Element IN-7011 HD, 1x Quick Installation Guide

INSTAR Deutschland GmbH hereby ensures that you will not lose your warranty by installing this additional heater.

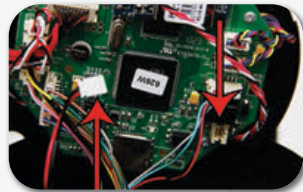
ATTENTION: Any damages caused by the user by faulty installation are excluded of the warranty.



Step 1: Please remove the 4 screws and take off the safety-ring.



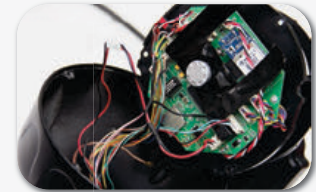
Step 2: Now remove the 3 screws inside the camera-housing and carefully take out the camera unit as shown in the picture above.



Step 3: Please remove the 2 Pin (red / black) cable from the main board in order to connect it with the heater in the next step.



Step 4: Connect the 2 Pin plug, which you just removed, with the one side of the heater. The other side of the heater will be connected with the plug on the main board from which you disconnected the cable before in step 3. Place the heater on the main board so that the thermostat is facing away from the main board.



Step 5: Place the camera unit back into the camera-housing and reassemble the camera the reversed way as shown in step 1-2.